



MOLDOVA

Institutional partnership between ANSA and LAVES

Improvement of the veterinary and food safety system in line with EU standards through capacity building and strengthening of administrative structures

The Agriculture in Moldova

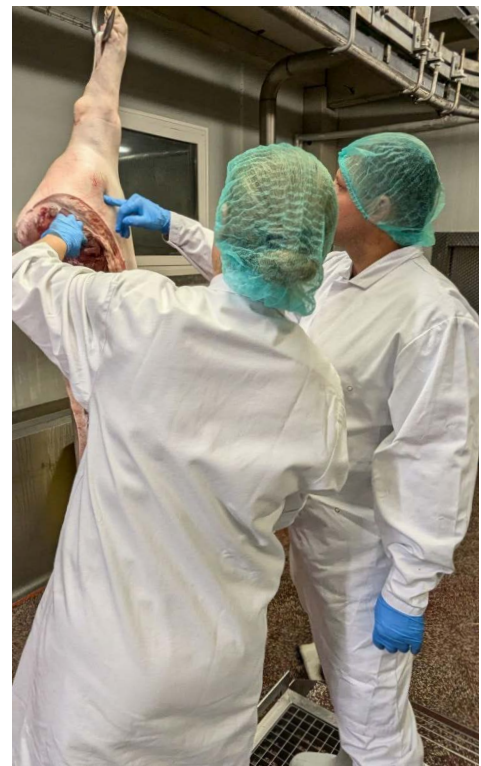
As an EU accession candidate, Moldova faces the challenging task of aligning its legislation with EU standards as well as enabling the supervisory authorities to implement and monitor them. Chapter 12 (food safety) is one of the most comprehensive chapters of the EU acquis. Although Moldova has already made progress in incorporating relevant EU legal acts into national law, the EU Commission concludes that the monitoring system for food safety, animal feed and veterinary drugs must be further developed and the competent authorities strengthened.

The Project

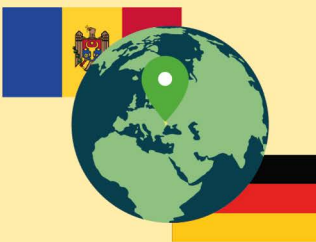
The institutional partnership aims to harmonize the veterinary and food safety system in Moldova with EU standards in cooperation with the Lower Saxony State Office for Consumer Protection and Food Safety (LAVES). A particular focus lies on strengthening the capacities of the National Agency for Food Safety (ANSA) in the areas of slaughterhouse inspections, drug monitoring and animal disease prevention. Joint activities include workshops, training courses, professional exchanges and study visits to Moldova and Germany.

Project Goals

- Capacity building of Moldovan inspectors for ante- and post-mortem meat examinations and approval of EU-compliant slaughterhouses.
- Improving the veterinary drug monitoring system, supporting veterinarians in keeping records and raising awareness on antibiotic reduction.
- Capacity building on animal disease control, including ASF & HPAI surveillance programs, animal disease fund system and animal carcass disposal facilities.



Moldovan veterinarians had the opportunity to put their previously acquired knowledge into practice and benefit directly from the experience of their German colleagues during the work shadowing in German slaughterhouses.



PROJECT TITLE

German-Moldovan institutional partnership in the field of veterinary and food safety

TIMEFRAME

10/2023 to 12/2025

AS OF

December 2024



Certification and Food Safety



Animal Welfare and Animal Husbandry

With support from



Federal Ministry of Food and Agriculture

by decision of the German Bundestag



PORTRAIT MOLDOVA

The Republic of Moldova is the smallest and one of the economically weakest countries in Europe. Agriculture plays an important role and accounts for nearly 8% of GDP and 45% of exports. Around 38% of the workforce is employed in agriculture and forestry. Moldova has been a candidate for EU accession since 2022, leading to many necessary reforms.

Results and Successes

- Conducting training courses on ante- and post-mortem inspection and the approval of slaughterhouses, as well as work shadowing by Moldovan veterinarians in German slaughterhouses.
- Analysis of the veterinary drug monitoring system in Moldova, demonstration of the German system, revision of checklists and joint inspections in both countries.
- Situation analysis and demonstration of animal disease control measures, including advice on the introduction of an animal disease fund system and work shadowing of Moldovan laboratory technicians in Germany.



Meeting with the leadership of ANSA in the context of the training of Moldovan slaughterhouse inspectors (December 2024)

Project Partners and Cooperations

- National Agency for Food Safety of the Republic of Moldova (ANSA)
- Lower Saxony State Office for Consumer Protection and Food Safety (LAVES)
- Federal Ministry of Food and Agriculture (BMEL)



Organizing institutions



GFA Consulting Group GmbH
Berlin Office
Wallstraße 15
10179 Berlin



Bilateral Cooperation Programme
of the BMEL



The BKP-Projects are supported with funds from the German Federal Ministry of Food and Agriculture under the supervision of GFA Consulting Group GmbH.

PUBLISHED BY
GFA Consulting Group GmbH
Berlin Office
Wallstraße 15
10179 Berlin,
buero-berlin@gfa-group.de

TEXT
GFA

PHOTO CREDITS
Page 1: GFA/Christian
Page 2: GFA/Paura

DESIGN
K-tiv.com, Berlin
Pauline De Langre
Michael Berger

AS OF
December 2024